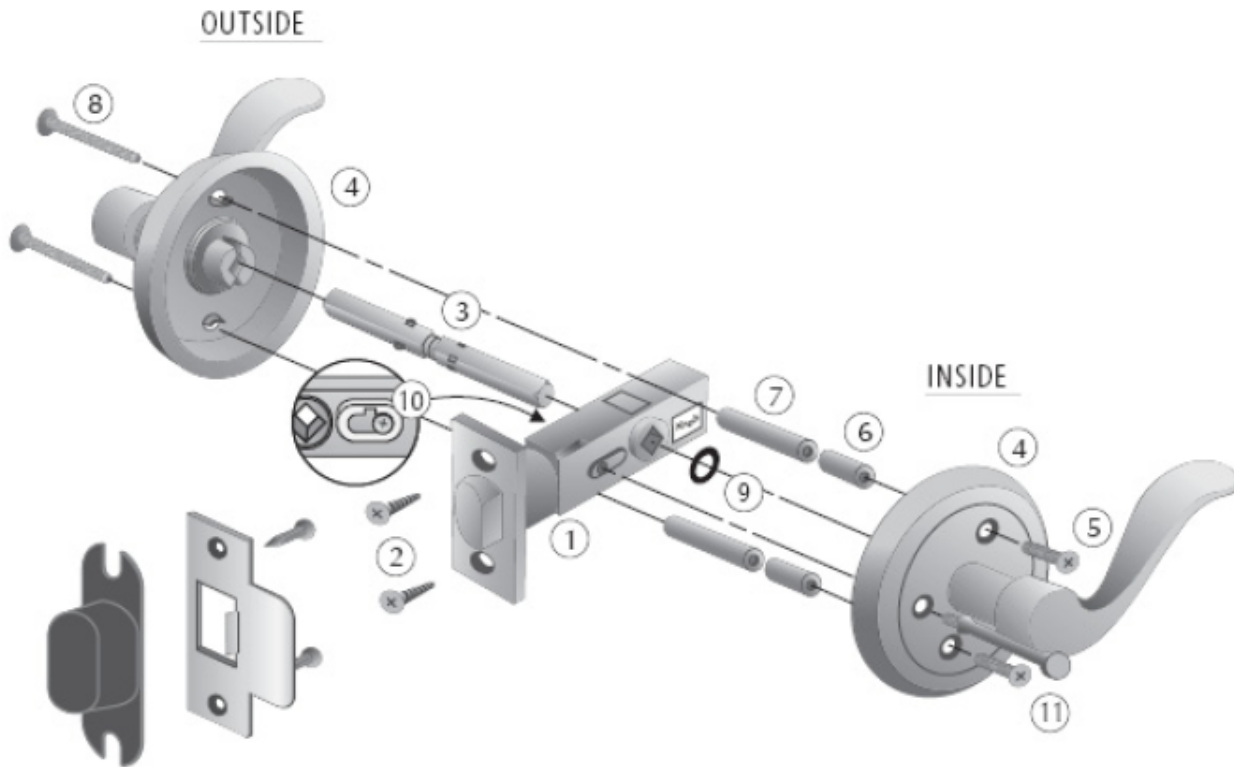


INSTALLATION INSTRUCTIONS

Seamless Transaction with Enhanced Product Features delivered on time and quality correct.



02 FUNCTION ~ 10 PLATE

LATCH:

- A. Insert the latch (1) into the edge of the bore and attach using screws (2). Pre-drill for screws using 1/8" drill bit. Make sure the bevel on the latch tongue is facing the jamb. (The latch face is removable so that the bevel can be reversed to maintain the "up" position of the latch.)
- B. From inside the door, push the button (10) on the latch to the outside and slip the white plastic oval ring over the button securing it with the small screw provided.
- C. Install the strike and dust box to the jamb. Pre-drill for screws as per latch.

INSTALL TRIM:

- D. Orient spindle (3) in the diamond position and push it through the latch (1) hub making sure that "tabs" on the spindle are on the outside.
- E. Roll rubber O ring (9) onto the spindle until it seats into the groove. (If this is not done, the spindle can drift in the latch and cause lockout.)
- F. Place the two 1" machine screws (5) into the face plate (4) and slide the 1/2" sleeves (6) over the screws and secure by threading into the 1" threaded stand-offs (7) and tighten.
- G. Install the inside and outside trim (4) onto the spindle.
- H. Screw in the privacy pin (11) through the inside plate.
- I. Install the long screws (8) into the threaded stand-offs. (The short screws are for 1-3/8" doors; the long screws are for 1-3/4" doors.).